



WeatherDrive[™]



DOOR TYPES: residential rolling garage doors **DOOR SIZE:** up to 15m²

The ideal product for powering sheds and carport roller doors

Key Benefits



Compliant to Australian and New Zealand Standard AS/NZS 60335-2-95



Weather Resistant

Market leading IP34 rated housing to help protect from the elements.



Slimline Design

Designed for tight spaces. The opener only requires minimum side room of 40 mm.



LED Lighting

9 ultrabright LED's built into the opener.



Security+2.0

Transmitters communicate on multiple frequencies with encrypted rolling code. This ensures the strongest frequency is selected every time, virtually eliminating interference while providing the highest level of security.



Up to 75% less energy*

Uses less than 1 watt of power whilst in standby mode. The best performance in the industry.



E-Lock

Control Panel buttons can be locked, providing better security.



Dual speed

Two travel speeds provides greater control and performance.



Quiet and Powerful Motor

The powerful and fast DC motor is quiet and built to last with the strength to open any garage door or shed.



Improved Transmitter Range

Tested against other products, these transmitters have up to 18% better range which means you can start opening your garage door sooner.



3 Year Warranty

Backed by a 3 year / 7,500 cycle warranty** we stand behind our products with an after sales support team that we believe are the best in the industry.

Standard Merlin Safety Features



Premium Automatic Safety Reverse

With its automatic safety function your garage door will stop and reverse automatically if obstructed going down or stop going up.



Automatic Force Sensing

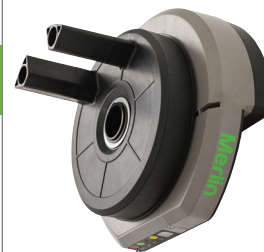
Equipped with automatic force sensing, with each operation the garage door opener monitors and adjusts the force needed to open your garage door.



Manual Release

In case of power failure you can simply activate the manual release to open your garage door.

*when compared to other available products ** conditions apply



Kit Contents

1 x Powerhead



2 x Three channel key ring mini-transmitters E945M



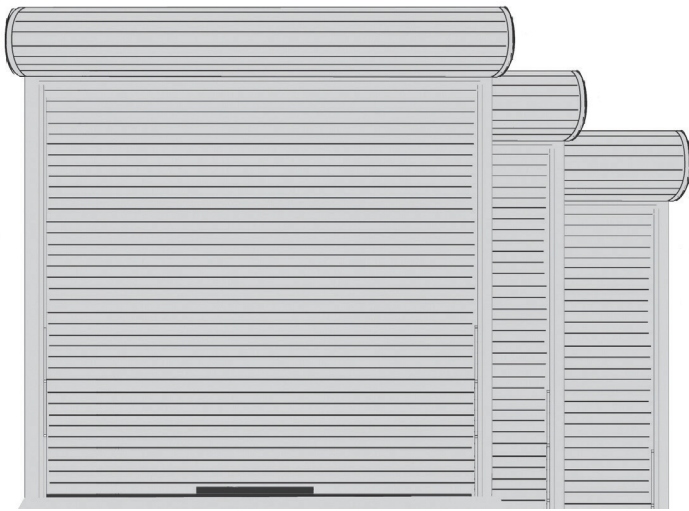
1 x Wireless wall button E138M



Weight bar

SPECIFICATIONS

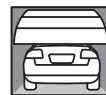
- IP34 housing
- 24V DC motor with thermal overload protection
- Input voltage: 240V AC
- Minimum side room 40mm
- Rated door area up to 15m²
- Max door weight: up to 100kg
- Drum rotations: 5.5
- Max peak pulling force: 500 N
- 433.30, 434.54, 433.92 MHz AM radio with Security+2.0 encrypted rolling code technology.
- Up to 64 memory registers
- Courtesy light: 9 standard ultrabright LEDs
- Noise rating 1M : 51DB
- Soft start/stop function



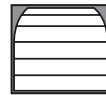
DOOR SPECIFICATIONS

- Maximum lifting under spring tension = 15kg
- Suitable for steel spring balanced doors

DOOR OPENING AND CLOSING TIMES



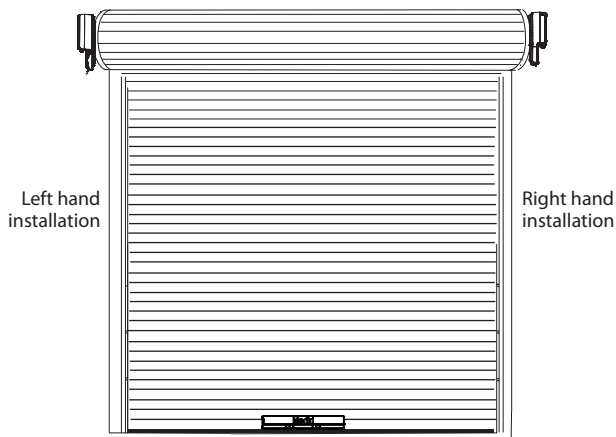
↑ 14 seconds (regular)
18 seconds (slow)



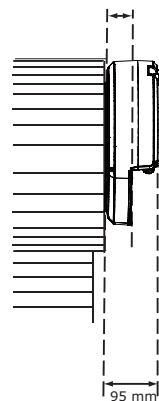
↓ 14 seconds (regular)
18 seconds (slow)
(based on a 2.3m high door)

Door height: 5.5m, 3.0m, 2.3m Door width: 6.0m, 5.0m, 3.5m
Single dwelling, max door weight: up to 100kg

TYPICAL INSTALLATION



Minimum distance from edge of curtain to edge of door bracket 40mm



OPTIONAL ACCESSORIES



Premium+ four channel transmitter
E960M



Wall or visor mounted three channel transmitter
E943M



Wall or visor mounted single channel transmitter
E940M



Wireless keypad
E840M



Protector system safety beam sensors
774ANZ

CHAMBERLAIN®

The World's Largest Manufacturer of Garage Door Openers

Australia Phone: 1800 638 234 Fax: 1800 888 121 Web: gomerlin.com.au
New Zealand Phone: 0800 653 667 Fax: 0800 653 663 Web: gomerlin.co.nz

™ Trademark of The Chamberlain Group, Inc. ® Registered Trademark of the Chamberlain Group, Inc.
© 2015 The Chamberlain Group, Inc.

